



# CRYSTAL WALL PROTECTION SYSTEMS



# ACCESSORIES AND MOLDINGS

## ASSEMBLY ACCESSORIES

### INSIDE CORNER



#### FEATURES

- Solid PVC support.
- PVC top with flexible lips for perfect adjustment.
- Easy assembly.
- Fastening system with hidden screws.

### END PIECE



#### FEATURES

- Used as a cap at the end point
- Easy assembly.

### INTERNAL COVE CORNER



#### FEATURES

- Internal piece provides a practical, smooth, neat and hygienic 3-ways corner
- Easy assembly.

### EXTERNAL COVE CORNER



#### FEATURES

- External piece provides a practical, smooth, neat and hygienic outside corner
- Easy assembly.

## MOLDINGS and ACCESSORIES

### PVC OMEGA PROFILE



#### FEATURES

- PVC Division Bar, consists of 2 pieces, base piece and cover piece.
- Easy assembly, you have to leave a space between the two panels, fix the first piece of Division Bar with screws, clamp the other piece, then use the sealant for the edges.

### S.S OUTSIDE CORNER



#### FEATURES

- Stainless Steel Corner profile sized 50 x 50 mm for joining two corner Panels
- Easy assembly.

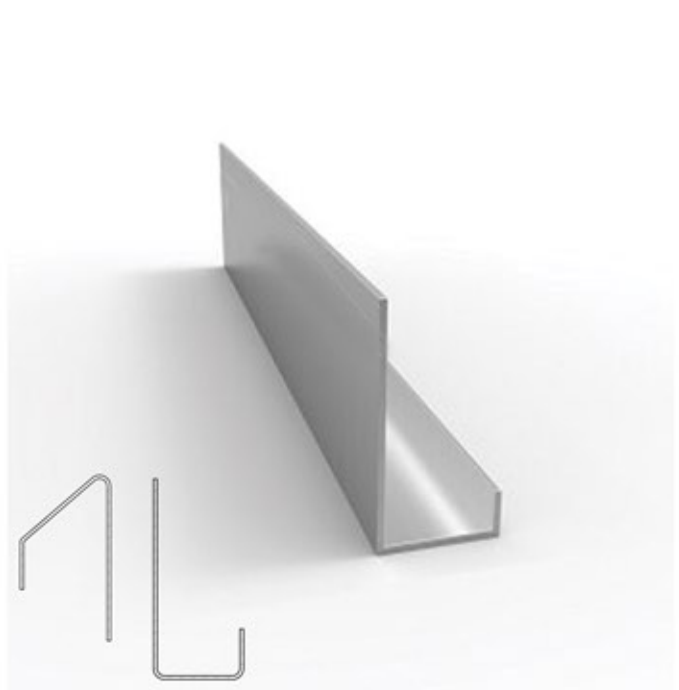
### PVC COVERED SKIRTING



#### FEATURES:

- Hygienic protection of wall panels
- Protection against water infiltration to the wall panels
- Avoidance of hollow spaces that can contain bacteria
- Skirting of the wall/floor and wall/kerb junction.

### S.S UPPER & LOWER CAP



#### FEATURES

- Stainless Steel top & bottom base, to fix the panels inside
- Easy assembly.



## MOLDINGS and ACCESSORIES

### STAINLESS STEEL BOLLARDS



#### FEATURES

- Protection for sliding doors and gates, machines, etc...
- High quality stainless steel AISI 304 L (316 L on request)
- Extra solid by concrete core
- Safe / Robust / High-quality finish

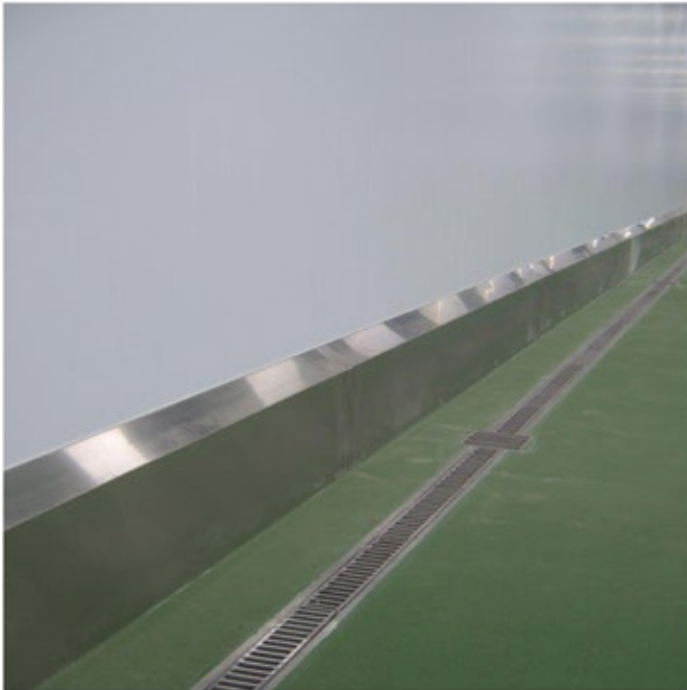
### STAINLESS STEEL SAFETY BARRIERS



#### FEATURES

- Protection for sliding doors and gates, machines, etc...
- High quality stainless steel AISI 304 L (316 L on request)
- Extra solid by concrete core
- Safe / Robust / High-quality finish

### STAINLESS STEEL KERBS



#### FEATURES:

- Hygienic & mechanical protection against heavy transport of wall panels in the food industry.
- Protection against water infiltration to the wall panels.
- Avoidance of hollow spaces that can contain bacteria.
- Application: Protection of panel walls against forklifts in production areas, refrigerators, despatch areas,...

### JOINT SEALANT

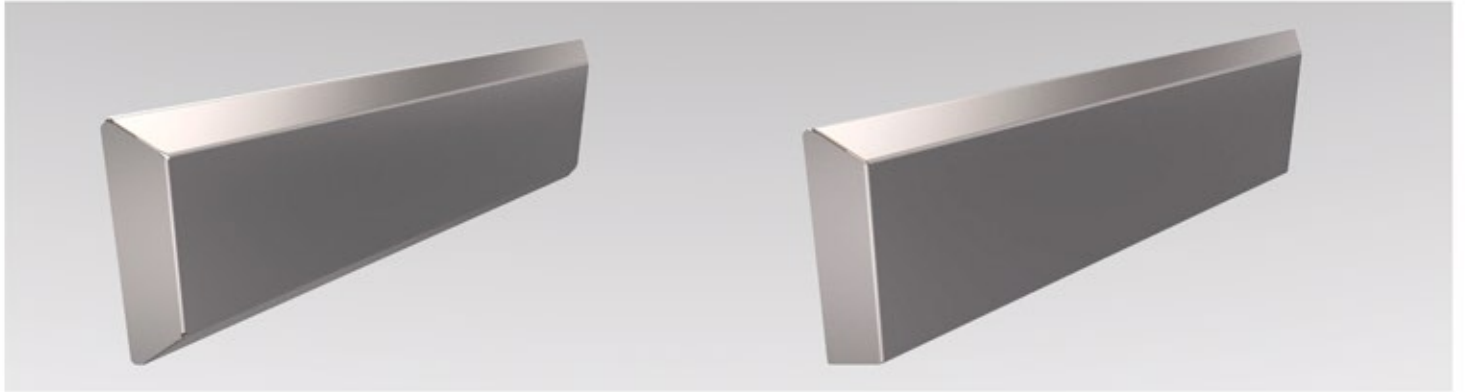


#### FEATURES:

- Elastic bonding between surfaces
- Fast curing and Good applicability and toolability
- Fungis resistant connection
- Resistant to high-pressure cleaning
- Good weather and UV resistance
- Excellent resistance to many chemicals

## MOLDINGS and ACCESSORIES

### CHAMFERED CRASH RAILS



### FEATURES

- Hygienic wall protection.
- Protection against water infiltration to the wall panels.
- Avoidance of hollow spaces that can contain bacteria.
- High quality stainless steel AISI 304 L (316 L on request)
- Safe / Robust / High-quality finish



## MOLDINGS and ACCESSORIES



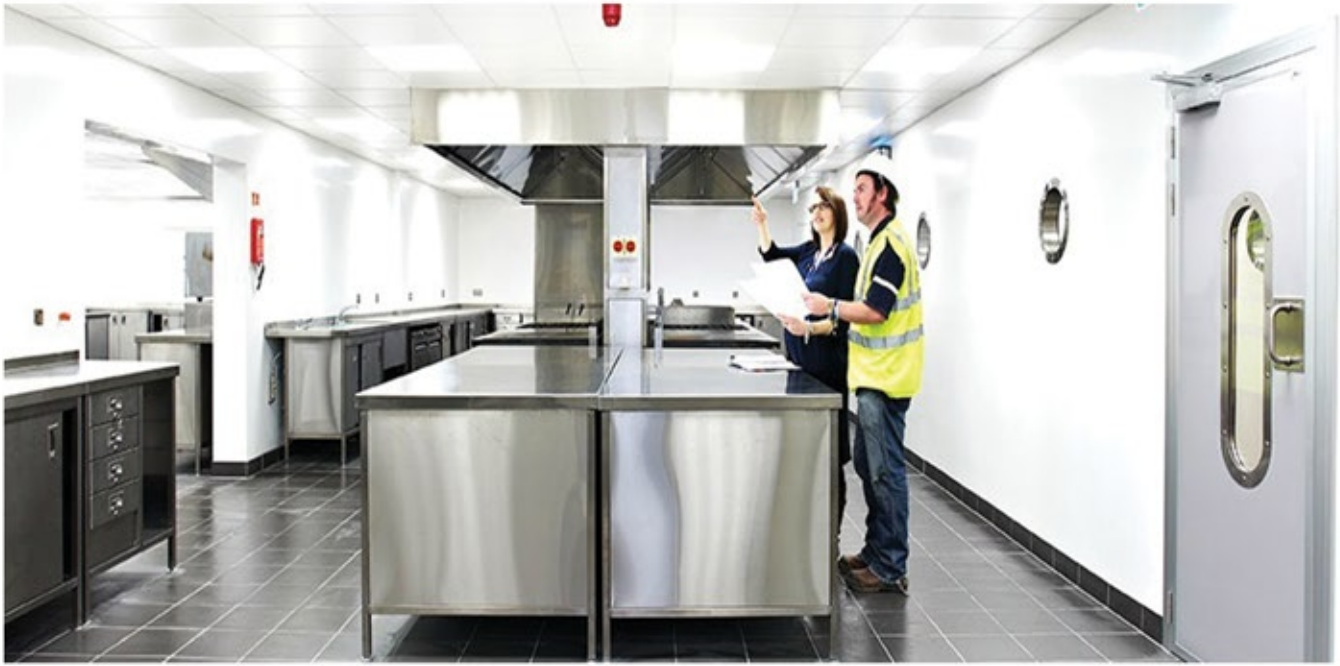


## MOLDINGS and ACCESSORIES











## **CRYSTAL WALL PROTECTION SYSTEMS**

---

### **GOLDEN CRYSTAL BUILDING MATERIALS TRADING L.L.C**

DUBAI - United Arab Emirates

Tel. +971 56 7659223  
+962 79 662 8787

Email: [fadi@goldencrystal.org](mailto:fadi@goldencrystal.org)  
[www.crystal-sol.com](http://www.crystal-sol.com)