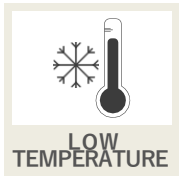
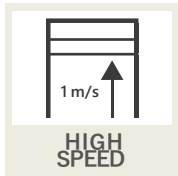
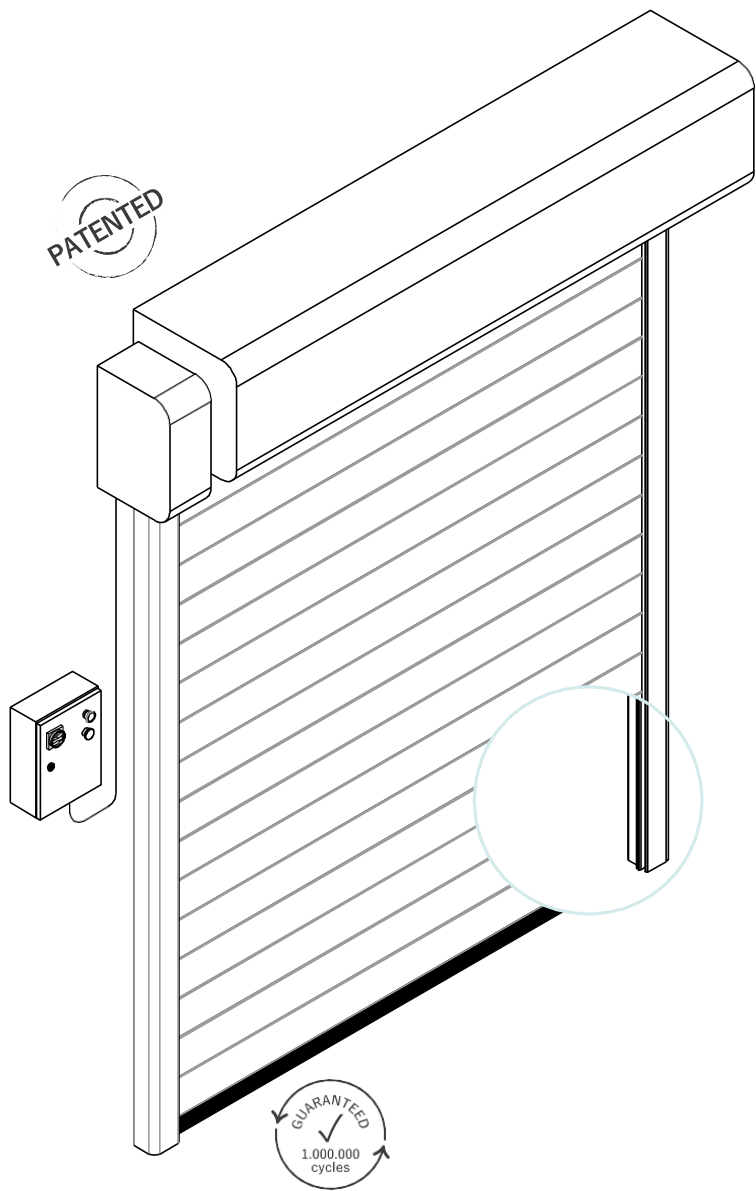


CRYSTAL COLD STORE 1



DESCRIPTION

Crystal Cold Store 1 is a self-repairing roll up door with a special sandwich curtain composed by PVC/ polyethylene expanded/ PVC curtain.

The insulating segments on curtain avoid the icing creating a thermal cut with a continuous insulation on curtain. Thickness of curtain is of about 18mm.

The frame structure is equipped with heating cables placed in the sliding system and in connections to avoid condensation and icing of curtain.

These features make door ideal for refrigeration field to divide environments with different temperatures with humidity less than 30%.

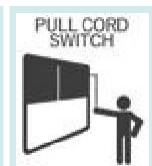
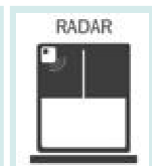
ADVANTAGES

- ✓ Self-repairing
- ✓ Rapid
- ✓ Sealing
- ✓ Noiseless
- ✓ No rigid elements inside the curtain for 100% safety
- ✓ Plug & play (easy to install)
- ✓ Low maintenance
- ✓ Insulating - Thermal K 2,2 Wm² K

APPLICATION

Door ideal solution for:

- ✓ Refrigeration industry
- ✓ Ideal for environments with controlled humidity level <30%



EN13241/CE

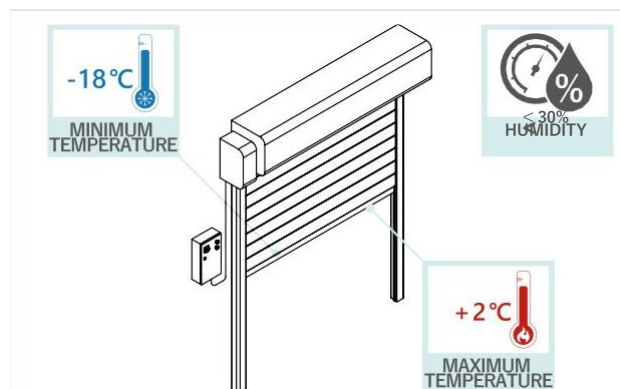
Standard	Ref.	Test acc.	Results
Water permeability	EN 12425	EN 12489	Class 1
Wind load	EN 12424	EN 12444	Class 2
Wind permeability	EN 12426	EN 12427	Class 1
Safe openings	EN 12453	EN 12445	✓
Mechanical resistance	EN 12604	EN 12605	✓
Unintended movements	EN 12604	EN 12605	✓
Thermal transmittance	EN 12428	EN 12428	2,2 W/m ² K
Performance (cycles)	EN 12604	EN 12605	1.000.000

VALUES CAN CHANGE DEPENDING ON DOOR DIMENSIONS

FEATURES	
Maximum dimensions	W 4000 mm x H 4500 mm
Speed	Max opening speed up to 1 m/s
	Closing speed 0,6 m/s
Wind resistance	Class 2
Structure	Not self-supporting
Frame / motor cover hood	Standard: Galvanized Steel
	Optional: Powder coated Steel Stainless Steel 441/ 316
Curtain	Standard: Double curtains welded with expanded polyethylene insulating 18 mm thick.
	Optional: Insulated 7 mm, 3.3 W/m²k FDA (white) Antistatic
Sliding system	Patented sliding system with high density Polyethylene self- lubricant equipped of sliding zipper directly on curtain.
Control panel	Standard: Powder coated Steel box IP54 (300 x 500 x 150 mm)
	Optional: Stainless Steel PVC box IP65 (300 x 400 x 150 mm)
	Inverter system 50/60 Hz with absolute encoder
	Power supply 1-ph, 230V max 16A
	Power supply 3-ph, 400V max 10A
	Power supply 3-ph, 230V max 16A
	Star/Stop Button
	2 free contacts (door open/ closed/ allarme)
	Automatic/ Manual Interlocking between 2 doors
	IP rating for motor and control panel IP54
Wiring	Plug and Play system IP65
Safeties	Standard: Photocells set IP65 Anti-jam sensor reverse WiFi safety edge IP65
	Optional: Multi ray light curtain barrier H2500 IP67

FEATURES	
Emergency opening	Standard: Hand crank
	Optional: Chain system Counterweight system UPS Battery
Heating Kit	Heater on electrical components and mechanical, heating cable 30W ml
Cycles (EN12604)	1.000.000 (tested)

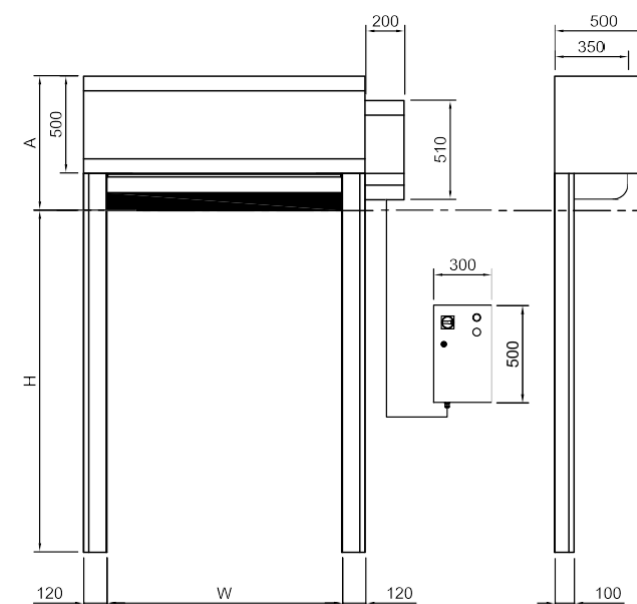
ADVISING OPERATIVE TEMPERATURE



SLIDING SYSTEM / SELF-REPAIRING

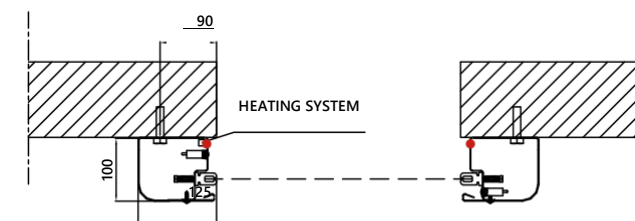


DOOR SPACE REQUIREMENTS



A: 1000

FIXING DETAILS



Available COLOURS

Simil RAL 9010

Simil RAL 1015	Simil RAL 3002	Simil RAL 9006	Simil RAL 7035	Simil RAL 5010
Simil RAL 1003	Simil RAL 8014	Simil RAL 7042	Simil RAL 6018	Simil RAL 5002
Simil RAL 2004	Simil RAL 9005	Simil RAL 7037	Simil RAL 6026	Simil RAL 5012